

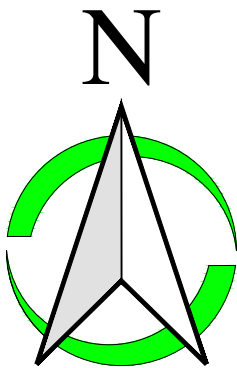
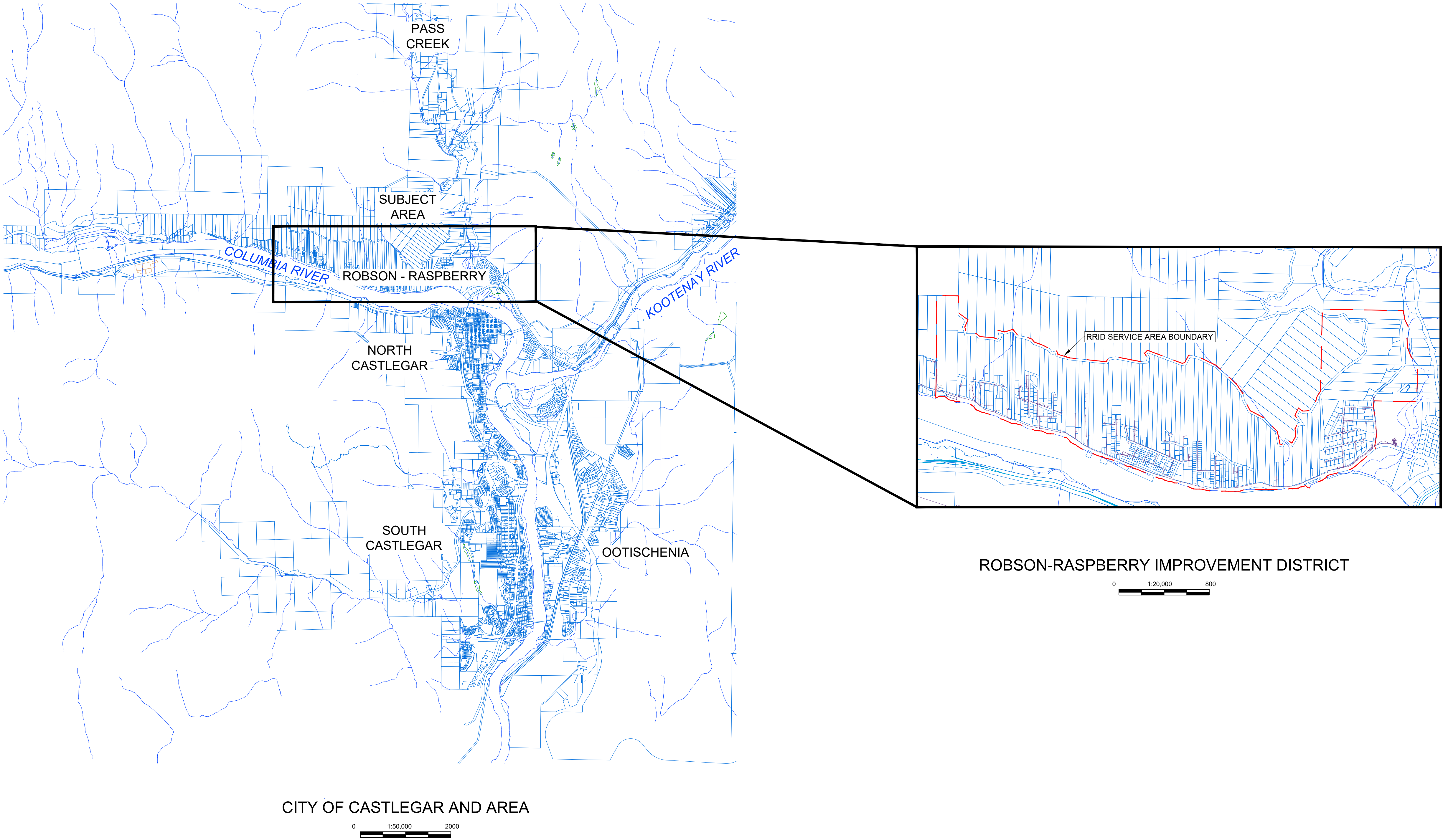
IT SHALL BE UNDERSTOOD THAT WSA ENGINEERING (2012) LTD. WILL PROVIDE DIGITAL DRAWING INFORMATION AS A COURTESY SUBJECT TO THE FOLLOWING TERMS AND CONDITIONS:

THE DIGITAL INFORMATION CONTAINED IN THE FILES IS "PROPRIETARY" IN NATURE AND MAY ONLY BE UTILIZED BY THE RECIPIENT FOR THE CURRENT PROJECT. ALL INFORMATION CONTAINED IN THE DIGITAL FILES MAY NOT BE REPRODUCED, SOLD, DISTRIBUTED OR UTILIZED IN ANY FORM ON OTHER PROJECTS, OR BY ANYONE ELSE, WITHOUT THE EXPRESS WRITTEN PERMISSION OF WSA ENGINEERING (2012) LTD.

DUE TO THE UNSECURED NATURE OF THE ELECTRONIC DATA TRANSFER AND THE INABILITY OF THE ORIGINATOR TO ESTABLISH CONTROLS OVER THE USE THEREOF, WSA ENGINEERING (2012) LTD. ASSUMES NO RESPONSIBILITY FOR ANY CONSEQUENCES ARISING OUT OF THE USE OF THIS DATA. IT IS THE SOLE RESPONSIBILITY OF THE USER TO CHECK THE VALIDITY OF ALL INFORMATION CONTAINED HEREIN. THE USER SHALL AT ALL TIMES REFER TO RELEVANT HARD COPY DRAWINGS AS ISSUED BY THIS OFFICE. THE USER SHALL ASSUME ALL RISKS AND LIABILITIES RESULTING FROM THE USE OF THIS DATA.

# RRID WATER METER INSTALLATION

## ROBSON-RASPBERRY IMPROVEMENT DISTRICT



PLAN ROTATION 0°

DRAWING COORDINATE SYSTEM  
UNIVERSAL TRANSVERSE MERCATOR ZONE 11N  
NORTH AMERICAN DATUM 1983

CERTIFICATION OF THE CONTENTS OF THIS DRAWING AND APPROVAL OF THE INCORPORATED DESIGN BY A PROFESSIONAL SIGNING AUTHORITY ARE PROVIDED BY ATTACHMENT OF THE APPROPRIATE SEAL AND DATED SIGNATURE. DRAWINGS WITHOUT THIS CERTIFICATION ARE NOT TO BE USED FOR PERMITTING APPLICATION, APPROVALS OR CONSTRUCTION PURPOSES.

C	17/10/2025	GH	ISSUED FOR TENDER	GH
B	29/09/2025	GH	FOR CONSTRUCTION PERMIT	GH
A	12/09/2025	PN	FOR CLIENT REVIEW	GH
No.	DD/MM/YYYY	BY	ISSUE	ENG.

No.	DD/MM/YYYY	BY	REVISIONS FOR ISSUE	ENG.



**ENGINEERING (2012) LTD.**  
Civil • Structural • Building Design  
2348 Columbia Ave. Castlegar, B.C. V1N 2X1 Ph: (888) 617-6927

BC Permit to Practice No. 1003247

### RRID WATER METER INSTALLATION

ROBSON-RASPBERRY IMPROVEMENT DISTRICT

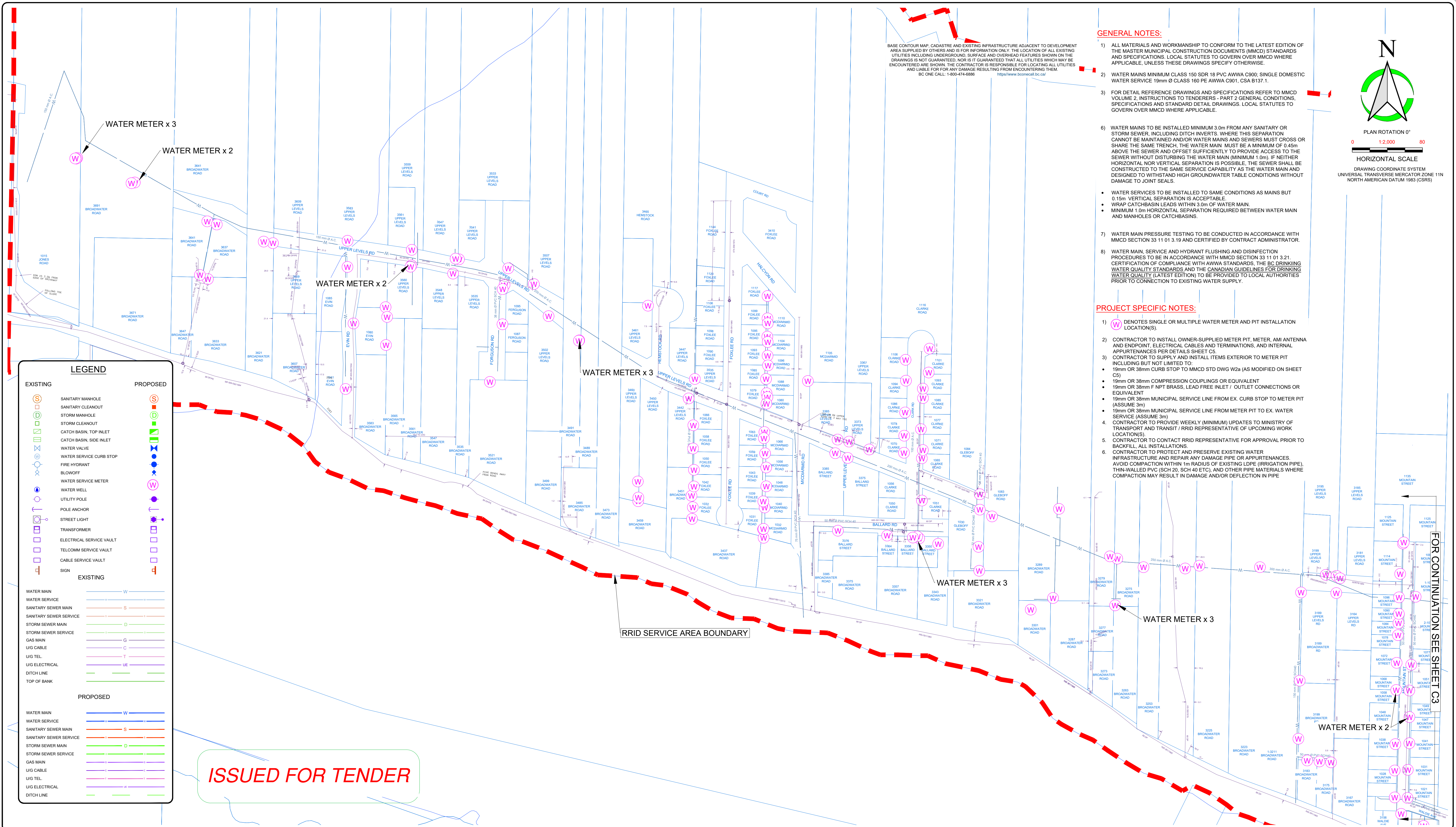
## LOCATION PLAN AND DRAWING INDEX

DRAWN BY	DATE
PN	22/07/2025
CHECKED BY	DATE
GH	12/09/2025
APPROVED BY	DATE
GH	12/09/2025

HOR. SCALE	AS NOTED	VERT. SCALE
PROJECT FILE No.	C25248-003	
SHEET	# IN SET	5
ISSUE	C	REV. -

ISSUED FOR TENDER





**GENERAL NOTES:**

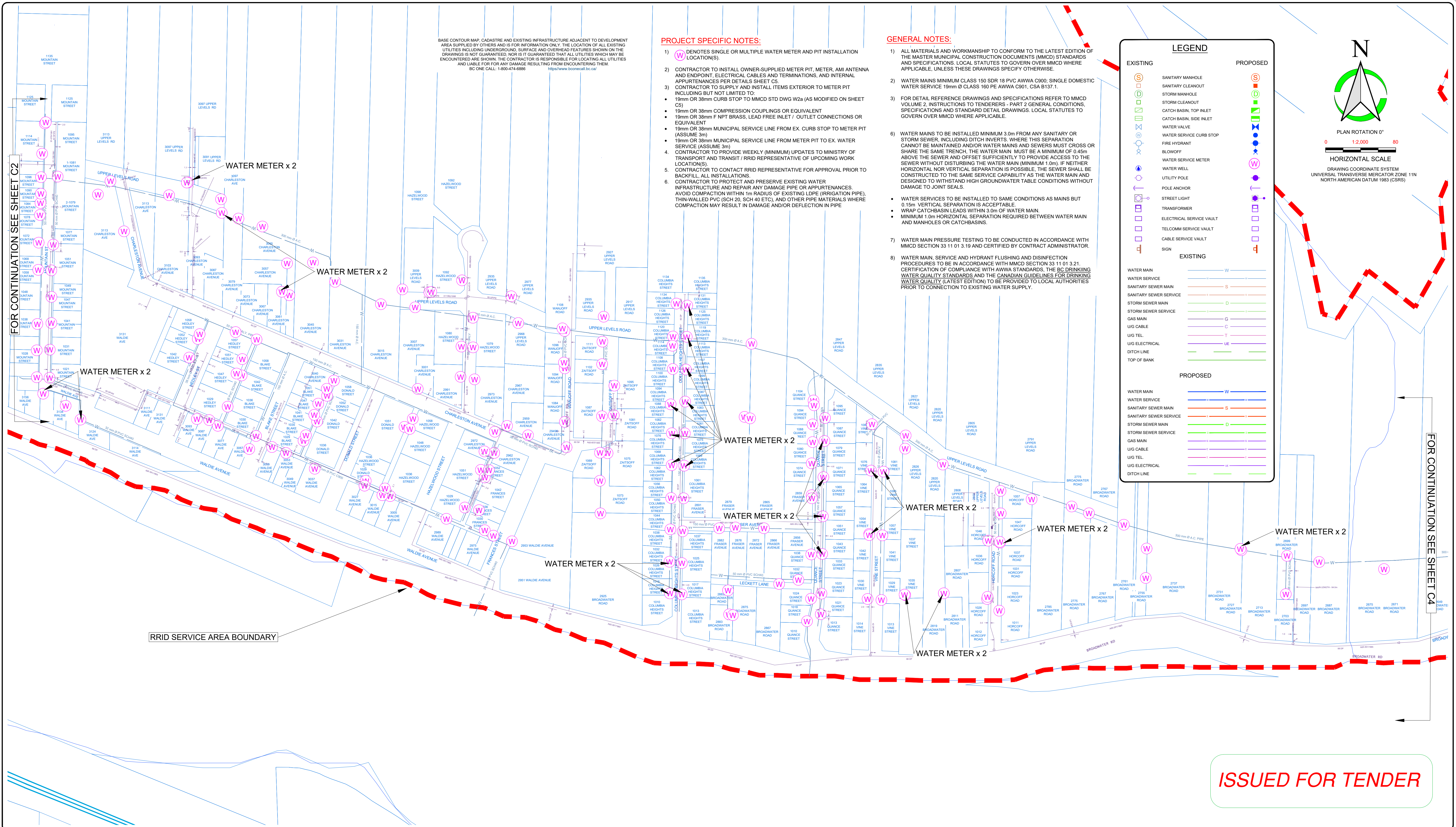
- 1) ALL MATERIALS AND WORKMANSHIP TO CONFORM TO THE LATEST EDITION OF THE MASTER MUNICIPAL CONSTRUCTION DOCUMENTS (MMCD) STANDARDS AND SPECIFICATIONS. LOCAL STATUTES TO GOVERN OVER MMCD WHERE APPLICABLE, UNLESS THESE DRAWINGS SPECIFY OTHERWISE.
- 2) WATER MAINS MINIMUM CLASS 150 SDR 18 PVC AWWA C900, SINGLE DOMESTIC WATER SERVICE 19mm Ø CLASS 160 PE AWWA C901, CSA B137.1.
- 3) FOR DETAIL REFERENCE DRAWINGS AND SPECIFICATIONS REFER TO MMCD VOLUME 2, INSTRUCTIONS TO TENDERERS - PART 2 GENERAL CONDITIONS, SPECIFICATIONS AND STANDARD DETAIL DRAWINGS. LOCAL STATUTES TO GOVERN OVER MMCD WHERE APPLICABLE.
- 6) WATER MAINS TO BE INSTALLED MINIMUM 3.0m FROM ANY SANITARY OR STORM SEWER, INCLUDING DITCH INVERTS. WHERE THIS SEPARATION CANNOT BE MAINTAINED AND/OR WATER MAINS AND SEWERS MUST CROSS OR SHARE THE SAME TRENCH, THE WATER MAIN MUST BE A MINIMUM OF 0.45m ABOVE THE SEWER AND OFFSET SUFFICIENTLY TO PROVIDE ACCESS TO THE SEWER WITHOUT DISTURBING THE WATER MAIN (MINIMUM 1.0m). IF NEITHER HORIZONTAL NOR VERTICAL SEPARATION IS POSSIBLE, THE SEWER SHALL BE CONSTRUCTED TO THE SAME SERVICE CAPABILITY AS THE WATER MAIN AND DESIGNED TO WITHSTAND HIGH GROUNDWATER TABLE CONDITIONS WITHOUT DAMAGE TO JOINT SEALS.
- 7) WATER MAIN PRESSURE TESTING TO BE CONDUCTED IN ACCORDANCE WITH MMCD SECTION 33 11 01 3.19 AND CERTIFIED BY CONTRACT ADMINISTRATOR.
- 8) WATER MAIN, SERVICE AND HYDRANT FLUSHING AND DISINFECTION PROCEDURES TO BE IN ACCORDANCE WITH MMCD SECTION 33 11 01 3.21. CERTIFICATION OF COMPLIANCE WITH AWWA STANDARDS, THE BC DRINKING WATER QUALITY STANDARDS AND THE CANADIAN GUIDELINES FOR DRINKING WATER QUALITY (LATEST EDITION) TO BE PROVIDED TO LOCAL AUTHORITIES PRIOR TO CONNECTION TO EXISTING WATER SUPPLY.

**PROJECT SPECIFIC NOTES:**

- 1) (W) DENOTES SINGLE OR MULTIPLE WATER METER AND PIT INSTALLATION LOCATION(S).
- 2) CONTRACTOR TO INSTALL OWNER-SUPPLIED METER PIT, METER, AMI ANTENNA AND ENDPOINT, ELECTRICAL CABLES AND TERMINATIONS, AND INTERNAL APPURTENANCES PER DETAILS SHEET C5.
- 3) CONTRACTOR TO SUPPLY AND INSTALL ITEMS EXTERIOR TO METER PIT INCLUDING BUT NOT LIMITED TO:
  - 19mm OR 38mm CURB STOP TO MMCD STD DWG W2a (AS MODIFIED ON SHEET C5)
  - 19mm OR 38mm COMPRESSION COUPLINGS OR EQUIVALENT
  - 19mm OR 38mm F NPT BRASS, LEAD FREE INLET / OUTLET CONNECTIONS OR EQUIVALENT
  - 19mm OR 38mm MUNICIPAL SERVICE LINE FROM EX. CURB STOP TO METER PIT (ASSUME 3m)
  - 19mm OR 38mm MUNICIPAL SERVICE LINE FROM METER PIT TO EX. WATER SERVICE (ASSUME 3m)
- 4) CONTRACTOR TO PROVIDE WEEKLY (MINIMUM) UPDATES TO MINISTRY OF TRANSPORT AND TRANSIT / RRID REPRESENTATIVE OF UPCOMING WORK LOCATION(S).
- 5) CONTRACTOR TO CONTACT RRID REPRESENTATIVE FOR APPROVAL PRIOR TO BACKFILL ALL INSTALLATIONS.
- 6) CONTRACTOR TO PROTECT AND PRESERVE EXISTING WATER INFRASTRUCTURE AND REPAIR ANY DAMAGE PIPE OR APPURTENANCES. AVOID COMPACTION WITHIN 1m RADIUS OF EXISTING LDPE (IRRIGATION PIPE), THIN-WALLED PVC (SCH 20, SCH 40 ETC), AND OTHER PIPE MATERIALS WHERE COMPACTION MAY RESULT IN DAMAGE AND/OR DEFLECTION IN PIPE

**HORIZONTAL SCALE**  
PLAN ROTATION 0°  
0 12,000 80  
DRAWING COORDINATE SYSTEM  
UNIVERSAL TRANSVERSE MERCATOR ZONE 11N  
NORTH AMERICAN DATUM 1983 (CSRS)





PROJECT SPECIFIC NOTES:

- 1) W DENOTES SINGLE OR MULTIPLE WATER METER AND PIT INSTALLATION LOCATION(S).
- 2) CONTRACTOR TO INSTALL OWNER-SUPPLIED METER PIT, METER, AMI ANTENNA AND ENDPOINT, ELECTRICAL CABLES AND TERMINATIONS, AND INTERNAL APPURTENANCES PER DETAILS SHEET C5.
- 3) CONTRACTOR TO SUPPLY AND INSTALL ITEMS EXTERIOR TO METER PIT INCLUDING BUT NOT LIMITED TO:
  - 19mm OR 38mm CURB STOP TO MMCD STD DWG W2a (AS MODIFIED ON SHEET C5)
  - 19mm OR 38mm COMPRESSION COUPLINGS OR EQUIVALENT
  - 19mm OR 38mm F NPT BRASS, LEAD FREE INLET / OUTLET CONNECTIONS OR EQUIVALENT
  - 19mm OR 38mm MUNICIPAL SERVICE LINE FROM EX. CURB STOP TO METER PIT (ASSUME 3m)
  - 19mm OR 38mm MUNICIPAL SERVICE LINE FROM METER PIT TO EX. WATER SERVICE (ASSUME 3m)
- 4) CONTRACTOR TO PROVIDE WEEKLY (MINIMUM) UPDATES TO MINISTRY OF TRANSPORT AND TRANSIT / RRID REPRESENTATIVE OF UPCOMING WORK LOCATION(S).
- 5) CONTRACTOR TO CONTACT RRID REPRESENTATIVE FOR APPROVAL PRIOR TO BACKFILL ALL INSTALLATIONS.
- 6) CONTRACTOR TO PROTECT AND PRESERVE EXISTING WATER INFRASTRUCTURE AND REPAIR ANY DAMAGE PIPE OR APPURTENANCES. AVOID COMPACTION WITHIN 1m RADIUS OF EXISTING LODP (IRRIGATION PIPE), THIN-WALLED PVC (SCH 20, SCH 40 ETC), AND OTHER PIPE MATERIALS WHERE COMPACTION MAY RESULT IN DAMAGE AND/OR DEFLECTION IN PIPE

GENERAL NOTES:

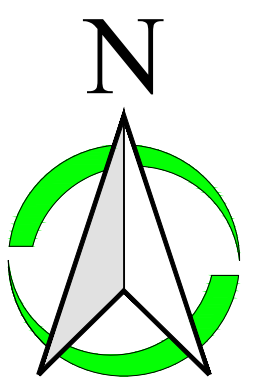
- 1) ALL MATERIALS AND WORKMANSHIP TO CONFORM TO THE LATEST EDITION OF THE MASTER MUNICIPAL CONSTRUCTION DOCUMENTS (MMCD) STANDARDS AND SPECIFICATIONS. LOCAL STATUTES TO GOVERN OVER MMCD WHERE APPLICABLE, UNLESS THESE DRAWINGS SPECIFY OTHERWISE.
- 2) WATER MAINS MINIMUM CLASS 150 SDR 18 PVC AWWA C900; SINGLE DOMESTIC WATER SERVICE 19mm Ø CLASS 160 PE AWWA C901, CSA B137.1.
- 3) FOR DETAIL REFERENCE DRAWINGS AND SPECIFICATIONS REFER TO MMCD VOLUME 2, INSTRUCTIONS TO TENDERERS - PART 2 GENERAL CONDITIONS, SPECIFICATIONS AND STANDARD DETAIL DRAWINGS. LOCAL STATUTES TO GOVERN OVER MMCD WHERE APPLICABLE.
- 6) WATER MAINS TO BE INSTALLED MINIMUM 3.0m FROM ANY SANITARY OR STORM SEWER, INCLUDING DITCH INVERTS. WHERE THIS SEPARATION CANNOT BE MAINTAINED AND/OR WATER MAINS AND SEWERS MUST CROSS OR SHARE THE SAME TRENCH, THE WATER MAIN MUST BE A MINIMUM OF 0.45m ABOVE THE SEWER AND OFFSET SUFFICIENTLY TO PROVIDE ACCESS TO THE SEWER WITHOUT DISTURBING THE WATER MAIN (MINIMUM 1.0m). IF NEITHER HORIZONTAL NOR VERTICAL SEPARATION IS POSSIBLE, THE SEWER SHALL BE CONSTRUCTED TO THE SAME SERVICE CAPABILITY AS THE WATER MAIN AND DESIGNED TO WITHSTAND HIGH GROUNDWATER TABLE CONDITIONS WITHOUT DAMAGE TO JOINT SEALS.
- WATER SERVICES TO BE INSTALLED TO SAME CONDITIONS AS MAINS BUT 0.15m VERTICAL SEPARATION IS ACCEPTABLE.
- WRAP CATCHBASIN LEADS WITHIN 3.0m OF WATER MAIN.
- MINIMUM 1.0m HORIZONTAL SEPARATION REQUIRED BETWEEN WATER MAIN AND MANHOLES OR CATCHBASINS.
- 7) WATER MAIN PRESSURE TESTING TO BE CONDUCTED IN ACCORDANCE WITH MMCD SECTION 33 11 01 3.19 AND CERTIFIED BY CONTRACT ADMINISTRATOR.
- 8) WATER MAIN, SERVICE AND HYDRANT FLUSHING AND DISINFECTION PROCEDURES TO BE IN ACCORDANCE WITH MMCD SECTION 33 11 01 3.21. CERTIFICATION OF COMPLIANCE WITH AWWA STANDARDS, THE BC DRINKING WATER QUALITY STANDARDS AND THE CANADIAN GUIDELINES FOR DRINKING WATER QUALITY (LATEST EDITION) TO BE PROVIDED TO LOCAL AUTHORITIES PRIOR TO CONNECTION TO EXISTING WATER SUPPLY.

LEGEND

EXISTING	PROPOSED

EXISTING	PROPOSED



0 1:2,000 80

HORIZONTAL SCALE

DRAWING COORDINATE SYSTEM  
UNIVERSAL TRANSVERSE MERCATOR ZONE 11N  
NORTH AMERICAN DATUM 1983 (CSRS)

**WSA ENGINEERING (2012) LTD.**  
Civil • Structural • Building Design  
2248 Columbia Ave. Castlegar, B.C. V1N 2X1 Ph: (888) 617-6927  
BC Permit to Practice No. 1003247

CERTIFICATION OF THE CONTENTS OF THIS DRAWING AND APPROVAL OF THE INCORPORATED DESIGN BY A PROFESSIONAL SIGNING AUTHORITY ARE PROVIDED BY ATTACHMENT OF THE APPROPRIATE SEAL AND DATED SIGNATURE. DRAWINGS WITHOUT THIS CERTIFICATION ARE NOT TO BE USED FOR PERMITTING APPLICATION, APPROVALS OR CONSTRUCTION PURPOSES.

No.	DD/MM/YYYY	BY	REVISIONS FOR ISSUE	ENG.

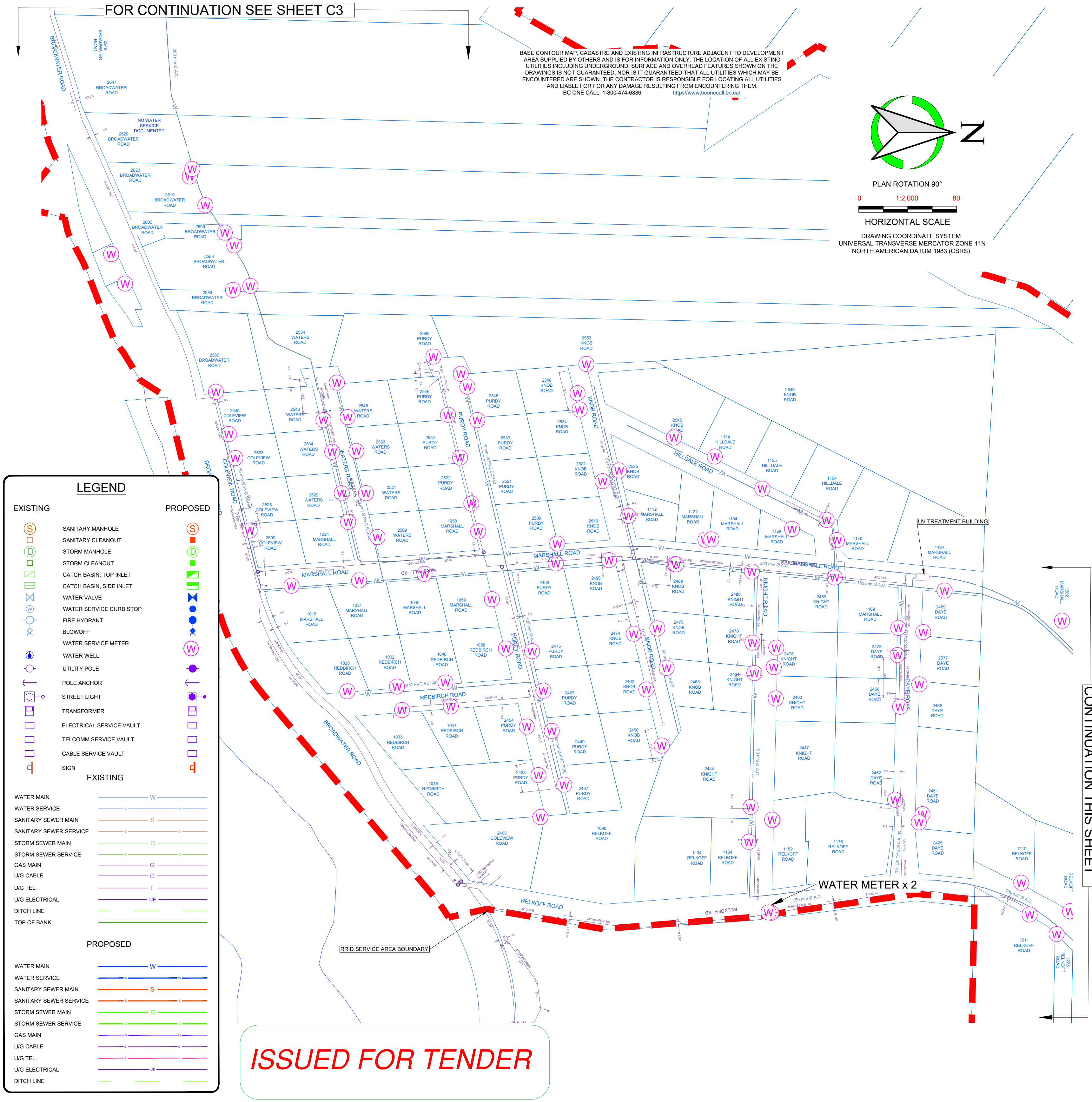
C	17/10/2025	GH	ISSUED FOR TENDER	GH
B	29/09/2025	GH	FOR CONSTRUCTION PERMIT	GH
A	12/09/2025	PN	FOR CLIENT REVIEW	GH
No.	DD/MM/YYYY	BY	ISSUE	ENG.

DRAWN BY	DATE
PN	22/07/2025
CHECKED BY	DATE
GH	12/09/2025
APPROVED BY	DATE
GH	12/09/2025

**RRID WATER METER INSTALLATION**  
ROBSON-RASPBERRY IMPROVEMENT DISTRICT  
**WATER SERVICING CENTER**

HOR. SCALE	1:2000	VERT. SCALE	
PROJECT FILE No.	C25248-003		
SHEET	C3	# IN SET	5
ISSUE	C	REV.	-



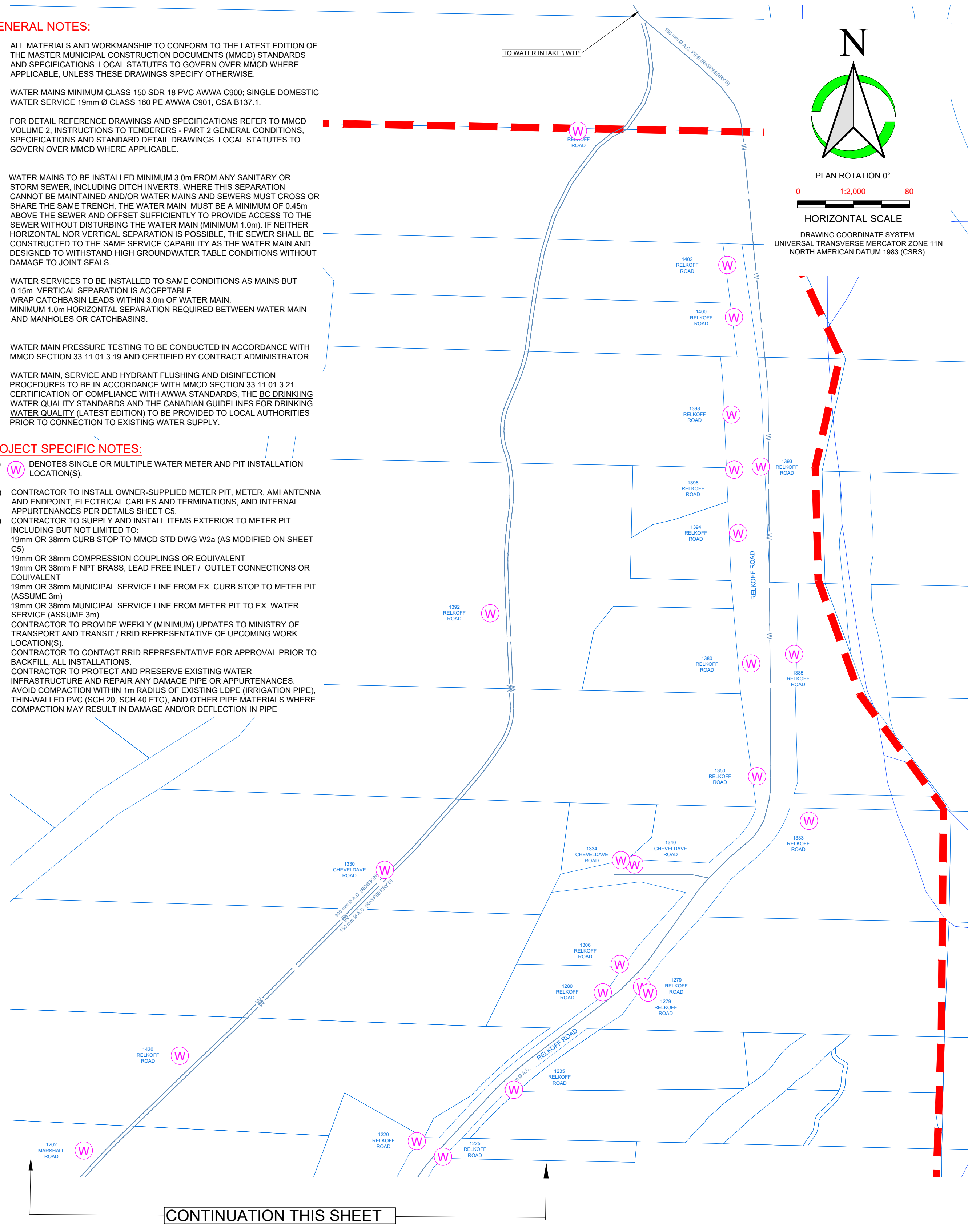


#### GENERAL NOTES:

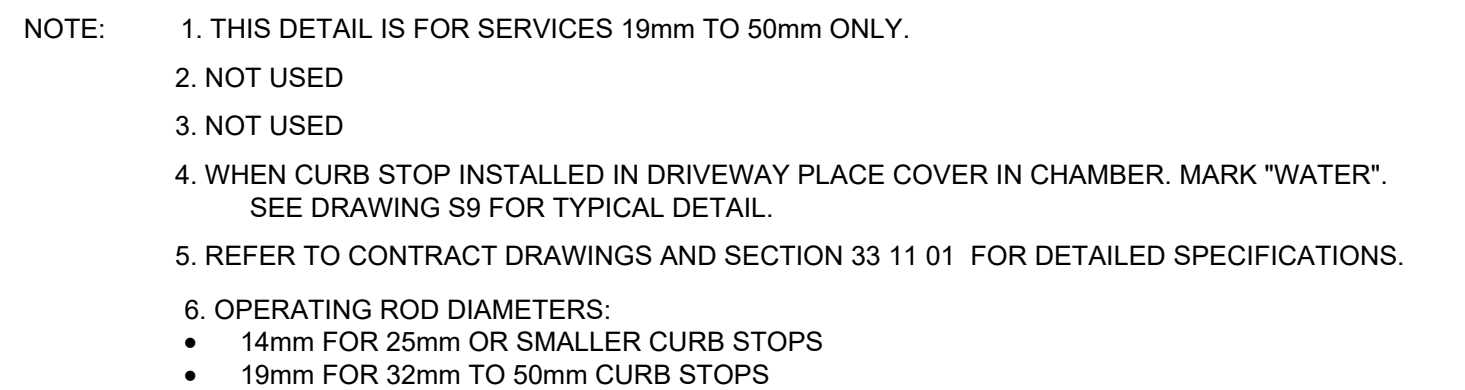
- 1) ALL MATERIALS AND WORKMANSHIP TO CONFORM TO THE LATEST EDITION OF THE MASTER MUNICIPAL CONSTRUCTION DOCUMENTS (MMCD) STANDARDS AND SPECIFICATIONS. LOCAL STATUTES TO GOVERN OVER MMCD WHERE APPLICABLE, UNLESS THESE DRAWINGS SPECIFY OTHERWISE.
- 2) WATER MAINS MINIMUM CLASS 150 SDR 18 PVC AWWA C900; SINGLE DOMESTIC WATER SERVICE 19mm Ø CLASS 160 PE AWWA C901, CSA B137.1.
- 3) FOR DETAIL REFERENCE DRAWINGS AND SPECIFICATIONS REFER TO MMCD VOLUME 2, INSTRUCTIONS TO TENDERERS - PART 2 GENERAL CONDITIONS, SPECIFICATIONS AND STANDARD DETAIL DRAWINGS. LOCAL STATUTES TO GOVERN OVER MMCD WHERE APPLICABLE.
- 4) WATER MAINS TO BE INSTALLED MINIMUM 3.0m FROM ANY SANITARY OR STORM SEWER, INCLUDING DITCH INVERTS. WHERE THIS SEPARATION CANNOT BE MAINTAINED AND/OR WATER MAINS AND SEWERS MUST CROSS OR SHARE THE SAME TRENCH, THE WATER MAIN MUST BE A MINIMUM OF 0.45m ABOVE THE SEWER AND OFFSET SUFFICIENTLY TO PROVIDE ACCESS TO THE SEWER WITHOUT DISTURBING THE WATER MAIN (MINIMUM 1.0m). IF NEITHER HORIZONTAL NOR VERTICAL SEPARATION IS POSSIBLE, THE SEWER SHALL BE CONSTRUCTED TO THE SAME SERVICE CAPABILITY AS THE WATER MAIN AND DESIGNED TO WITHSTAND HIGH GROUNDWATER TABLE CONDITIONS WITHOUT DAMAGE TO JOINT SEALS.
- 5) WATER SERVICES TO BE INSTALLED TO SAME CONDITIONS AS MAINS BUT 0.15m VERTICAL SEPARATION IS ACCEPTABLE.
- 6) WRAP CATCHBASIN LEADS WITHIN 3.0m OF WATER MAIN.
- 7) MINIMUM 1.0m HORIZONTAL SEPARATION REQUIRED BETWEEN WATER MAIN AND MANHOLES OR CATCHBASINS.
- 8) WATER MAIN PRESSURE TESTING TO BE CONDUCTED IN ACCORDANCE WITH MMCD SECTION 33 11 01 3.19 AND CERTIFIED BY CONTRACT ADMINISTRATOR.
- 9) WATER MAIN, SERVICE AND HYDRANT FLUSHING AND DISINFECTION PROCEDURES TO BE IN ACCORDANCE WITH MMCD SECTION 33 11 01 3.21.
- 10) CERTIFICATION OF COMPLIANCE WITH AWWA STANDARDS, THE BC DRINKING WATER QUALITY STANDARDS AND THE CANADIAN GUIDELINES FOR DRINKING WATER QUALITY (LATEST EDITION) TO BE PROVIDED TO LOCAL AUTHORITIES PRIOR TO CONNECTION TO EXISTING WATER SUPPLY.

#### PROJECT SPECIFIC NOTES:

- 1) (W) DENOTES SINGLE OR MULTIPLE WATER METER AND PIT INSTALLATION LOCATION(S).
- 2) CONTRACTOR TO INSTALL OWNER-SUPPLIED METER PIT, METER, AMI ANTENNA AND ENDPOINT, ELECTRICAL CABLES AND TERMINATIONS, AND INTERNAL APPURTENANCES PER DETAILS SHEET C5.
- 3) CONTRACTOR TO SUPPLY AND INSTALL ITEMS EXTERIOR TO METER PIT INCLUDING BUT NOT LIMITED TO:
  - 19mm OR 38mm CURB STOP TO MMCD STD DWG W2a (AS MODIFIED ON SHEET C5)
  - 19mm OR 38mm COMPRESSION COUPLINGS OR EQUIVALENT
  - 19mm OR 38mm F NPT BRASS, LEAD FREE INLET / OUTLET CONNECTIONS OR EQUIVALENT
  - 19mm OR 38mm MUNICIPAL SERVICE LINE FROM EX. CURB STOP TO METER PIT (ASSUME 3m)
  - 19mm OR 38mm MUNICIPAL SERVICE LINE FROM METER PIT TO EX. WATER SERVICE (ASSUME 3m)
- 4) CONTRACTOR TO PROVIDE WEEKLY (MINIMUM) UPDATES TO MINISTRY OF TRANSPORT AND TRANSIT / RRID REPRESENTATIVE OF UPCOMING WORK LOCATION(S).
- 5) CONTRACTOR TO CONTACT RRID REPRESENTATIVE FOR APPROVAL PRIOR TO BACKFILL, ALL INSTALLATIONS.
- 6) CONTRACTOR TO PROTECT AND PRESERVE EXISTING WATER INFRASTRUCTURE AND REPAIR ANY DAMAGE PIPE OR APPURTENANCES. AVOID COMPACTION WITHIN 1m RADIUS OF EXISTING LDPE (IRRIGATION PIPE), THIN-WALLED PVC (SCH 20, SCH 40 ETC), AND OTHER PIPE MATERIALS WHERE COMPACTION MAY RESULT IN DAMAGE AND/OR DEFLECTION IN PIPE







STANDARD DRAWING NUMBER W2a  
N.T.S.

